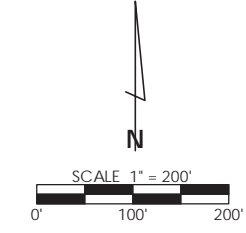
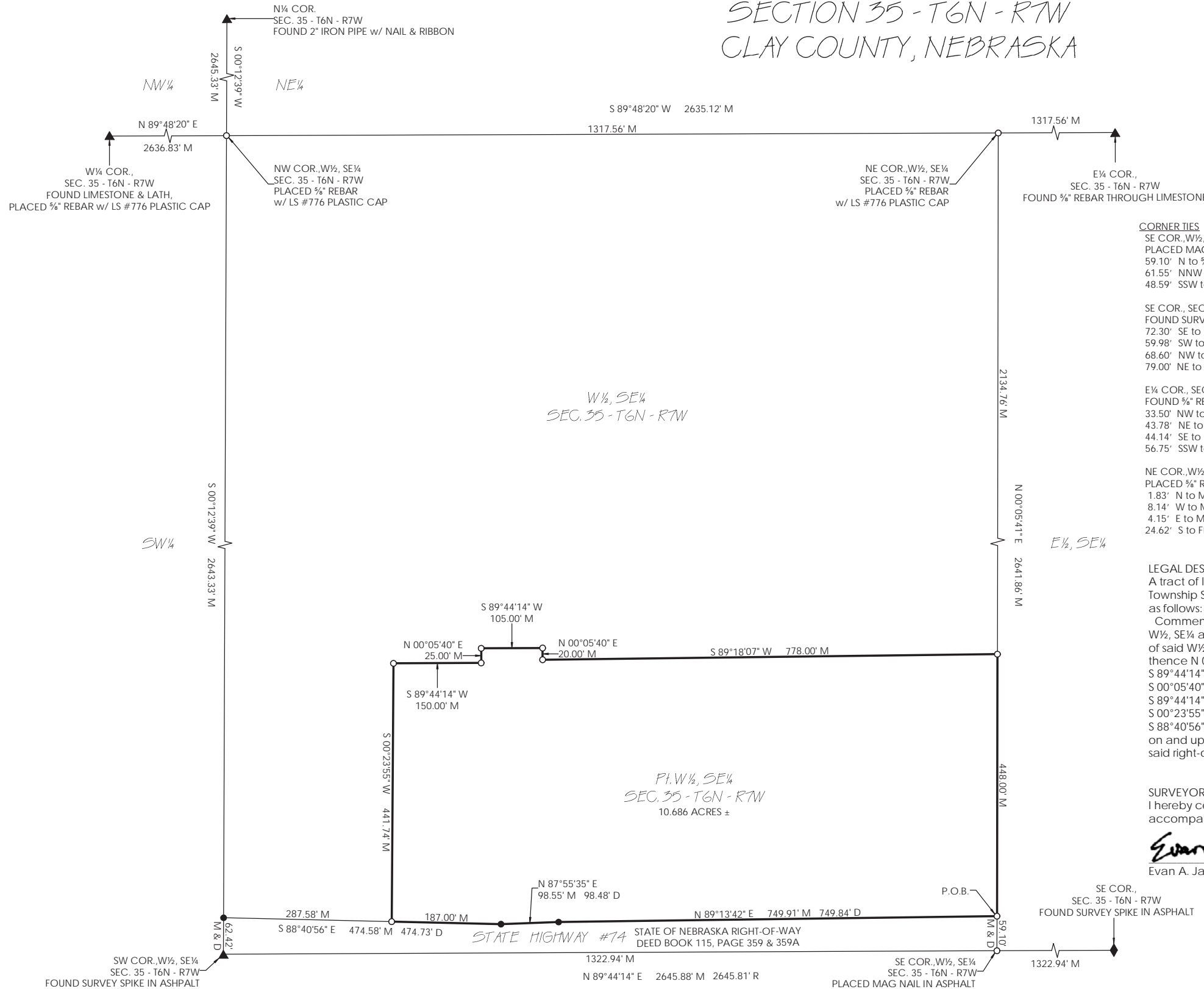


A PART OF THE W¹/₂, SE¹/₄
SECTION 35 - T6N - R7W
CLAY COUNTY, NEBRASKA



LEGEND
M = MEASURED DISTANCE
D = DEEDED DISTANCE (DEED BOOK 115, PAGE 359 & 359A)
R = RECORDED DISTANCE R.L.S. #673 SURVEY 12/28/12)
P.O.B. = POINT OF BEGINNING
X = COMPUTED POINT
○ = 3/4\" REBAR w/ PLASTIC CAP PLACED
● = 3/4\" REBAR FOUND UNLESS NOTED

CORNER TIES

SE COR., W¹/₂, SE¹/₄, SEC. 35 - T6N - R7W
PLACED MAG NAIL IN ASPHALT
59.10' N to 3/4\" REBAR w/ LS #776 PLASTIC CAP
61.55' NNW to NAIL IN FENCE BRACE POST
48.59' SSW to 3/4\" REBAR w/ PLASTIC CORNER TIE CAP

SE COR., SEC. 35 - T6N - R7W
FOUND SURVEY SPIKE IN ASPHALT
72.30' SE to CHISELED 'X' IN ROW MARKER
59.98' SW to CHISELED 'X' IN ROW MARKER
68.60' NW to CHISELED 'X' IN ROW MARKER
79.00' NE to NAIL IN TELE. PEDESTAL POST

E¹/₄ COR., SEC. 35 - T6N - R7W
FOUND 3/4\" REBAR THROUGH LIMESTONE
33.50' NW to 3/4\" REBAR w/ PLASTIC CORNER TIE CAP
43.78' NE to 3/4\" REBAR w/ PLASTIC CORNER TIE CAP
44.14' SE to 3/4\" REBAR w/ PLASTIC CORNER TIE CAP
56.75' SSW to FRONT FACE OF NORTH PIVOT STOP POST

NE COR., W¹/₂, SE¹/₄, SEC. 35 - T6N - R7W
PLACED 3/4\" REBAR w/ LS #776 PLASTIC CAP
1.83' N to MAG NAIL IN FENCE POST
8.14' W to MAG NAIL IN FENCE BRACE POST
4.15' E to MAG NAIL IN 8' TREE
24.62' S to FRONT FACE OF NORTH PIVOT STOP POST

N¹/₄ COR., SEC. 35 - T6N - R7W
FOUND 2\" IRON PIPE w/ NAIL & RIBBON
31.88' S to MAG NAIL IN CORNER FENCE POST
88.43' ENE to NAIL IN POWER POLE
51.37' NW to NAIL IN POWER POLE

W¹/₄ COR., SEC. 35 - T6N - R7W
FOUND LIMESTONE & LATH,
PLACED 3/4\" REBAR w/ LS #776 PLASTIC CAP OVER TOP
54.03' NW to 3/4\" REBAR w/ PLASTIC CORNER TIE CAP
27.58' W to NAIL IN SQUARE FENCE POST
51.47' SW to 3/4\" REBAR w/ PLASTIC CORNER TIE CAP

SW COR., W¹/₂, SE¹/₄, SEC. 35 - T6N - R7W
FOUND SURVEY SPIKE IN ASPHALT
58.18' S to CHISELED 'X' IN TOP OF ROW MARKER
62.11' N to CHISELED 'X' IN TOP OF ROW MARKER
67.85' NE to MAG NAIL IN EAST END OF CMP
63.76' NW to DIMPLE IN TOP SW BOLLARD
OF GAS METER ENCLOSURE

NW COR., W¹/₂, SE¹/₄, SEC. 35 - T6N - R7W
PLACED 3/4\" REBAR w/ LS #776 PLASTIC CAP
9.52' E to MAG NAIL IN CORNER FENCE POST
1.52' NW to MAG NAIL IN FENCE BRACE POST
17.39' W to MAG NAIL IN FENCE POST

LEGAL DESCRIPTION
A tract of land comprising a part of the West Half of the Southeast Quarter (W¹/₂, SE¹/₄), Section Thirty Five (35), Township Six (6) North, Range Seven (7) West of the 6th P.M., Clay County, Nebraska. More particularly described as follows:
Commencing at the southeast corner of said W¹/₂, SE¹/₄; thence N 00°05'40\" E on and upon the east line of said W¹/₂, SE¹/₄ a distance of 59.10 feet to the Point of Beginning; thence N 00°05'40\" E continuing upon the east line of said W¹/₂, SE¹/₄ a distance of 448.00 feet to a point; thence S 89°18'07\" W a distance of 778.00 feet to a point; thence N 00°05'40\" E and parallel with the east line of said W¹/₂, SE¹/₄ a distance of 20.00 feet to a point; thence S 89°44'14\" W and parallel with the south line of said W¹/₂, SE¹/₄ a distance of 105.00 feet to a point; thence S 00°05'40\" W and parallel with the east line of said W¹/₂, SE¹/₄ a distance of 25.00 feet to a point; thence S 89°44'14\" W and parallel with the south line of said W¹/₂, SE¹/₄ a distance of 150.00 feet to a point; thence S 00°23'55\" W a distance of 441.74 feet to a point on the northerly right-of-way line of State Highway #74; thence S 88°40'56\" E on and upon said right-of-way line a distance of 187.00 feet to a point; thence N 87°55'35\" E continuing on and upon said right-of-way line a distance of 98.56 feet to a point; thence N 89°13'42\" E continuing on and upon said right-of-way line a distance of 749.91 feet to the Point of Beginning. Said tract contains 10.686 acres more or less.

SURVEYORS CERTIFICATE
I hereby certify that on July 24, 2019, I completed an accurate survey of the above described property as shown on the accompanying plat. All dimensions are in feet and are accurate to the best of my knowledge and belief.

Evan A. Jasnowski
Evan A. Jasnowski R.L.S. #776




JASNOWSKI SURVEYING LLC
SURVEY REQUESTED BY BARB KLIEWER
PROJECT NUMBER 19-LS-75 - DATE 07/29/2019
DRAWN BY E.A.J. - CHECKED BY E.B.J.
1203 1st STREET, AURORA, NE 68818
PHONE 402-694-8703 - EMAIL ejasnowski@gmail.com